

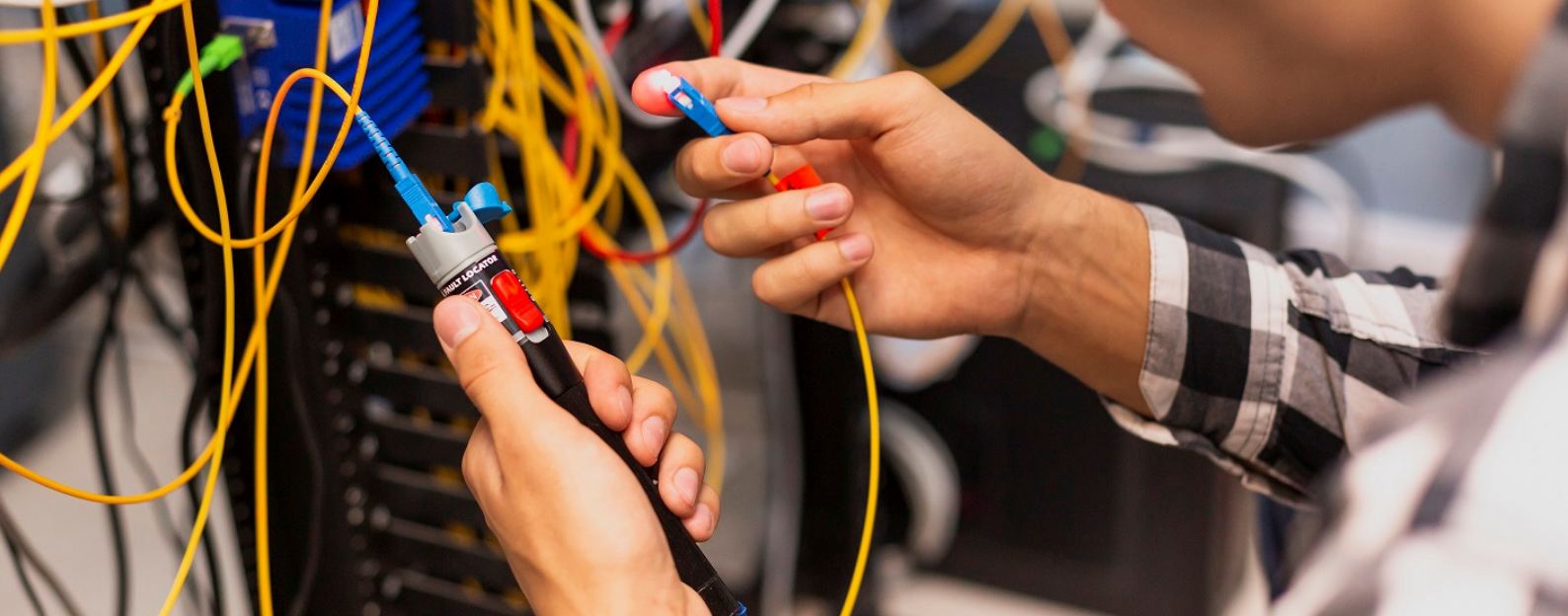


NOVA CABLE COMPANY

FIBER OPTIC COMPONENTS

An ISO 9001:2015 Certified Company





COMPANY PROFILE

Nova Cable Company (NCC) is one of the most reliable and reputed names in the business of Telecom Products & Solutions to Private sector as well as gov. sector. NCC established in 1993 and headquartered at New Delhi, was one of the first organizations to start manufacturing Coaxial Cables in 2005, we started manufacturing Optical Fibre Patch Cords & Accessories. In Oct' 2021 we also started manufacturing Optical Fibre Cables up to 12F unarmoured Cable. Our brands TM Scientific, Geberit and TNT in Coaxial Cables and Fibre Optics are well established and have pan India reach through our distribution network. We have a very competent & qualified team along with distribution network to cater various products to the entire satisfaction of our esteemed clients.

Everything we do at NCC is built on a platform based on solid core values designed and implemented to serve our clients. We foster the spirit of team work in ensuring that our clients view us as partners in their business. Our products are shaped by each client's unique needs and business context, aimed at giving the best of their spend.

Complete commitment to our core values, to our clients, to our people; to innovation and knowledge have helped us remain the most reliable partner to our clients.





QUALITY POLICY

We at NCC are committed to satisfying the need of our customers, clients and all stakeholders by ensuring timeliness, reliability, affordability and trustworthiness of our products and services.

We are committed to try to exceed customer expectation through adherence to internationally recognized quality management systems. It is this commitment to quality that allows us to deliver exceptional quality products to our clients.

Our mission is to provide technology and solutions with an expertise, so that the end user can access the internet at the speed of light. We want every home in India, to be a smart home and provide enough digital infrastructure that allows everyone to be a part of the digital society.

Our aim is to add value to our partners by simplifying their digital infrastructure needs and work in association with them to deliver more than just equipment but bring innovative, real-world solutions for all their IT needs.



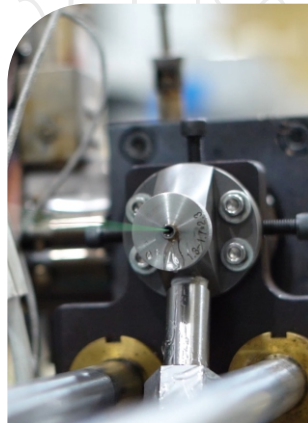


NOVA CABLE COMPANY
Complete FTTH Solutions



INFRASTRUCTURE

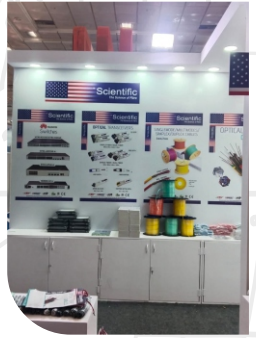
At NCC our mission is to be a leader in innovation and development of Telecom Products. We view ourselves as Products & Solutions provider to our clients. We are committed to providing world class telecommunication products through design and development of cutting edge, reliable and cost effective products.





EXHIBITION

At NCC our mission is to be a leader in innovation and development of Telecom Products. We view ourselves as Products & Solutions provider to our clients. We are committed to providing world class telecommunication products through design and development of cutting edge, reliable and cost effective products.



Cables Category

1. Optical Fiber Cable

- Single Tube: 2F to 12F
- Multitube Armoured: 2F to 288F
- Multitube Unarmoured: 12F to 48F

2. Simplex Cable: 2mm & 3mm

3. Duplex Cable

- Single and Multimode Both

4. FTTH

- Single Fiber
- Dual Fiber
- Figure 8

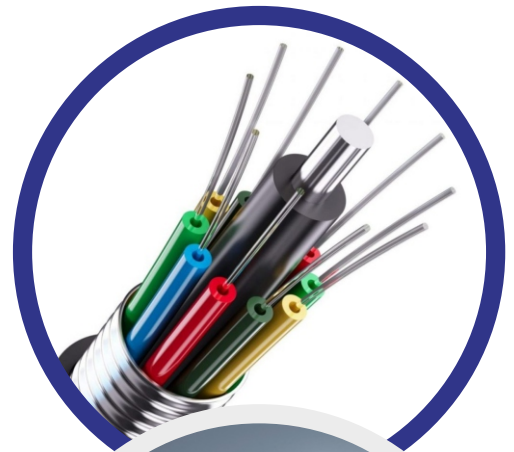
5. LAN Cables

- CAT 6
- CAT 6E

6. CPRI Cables

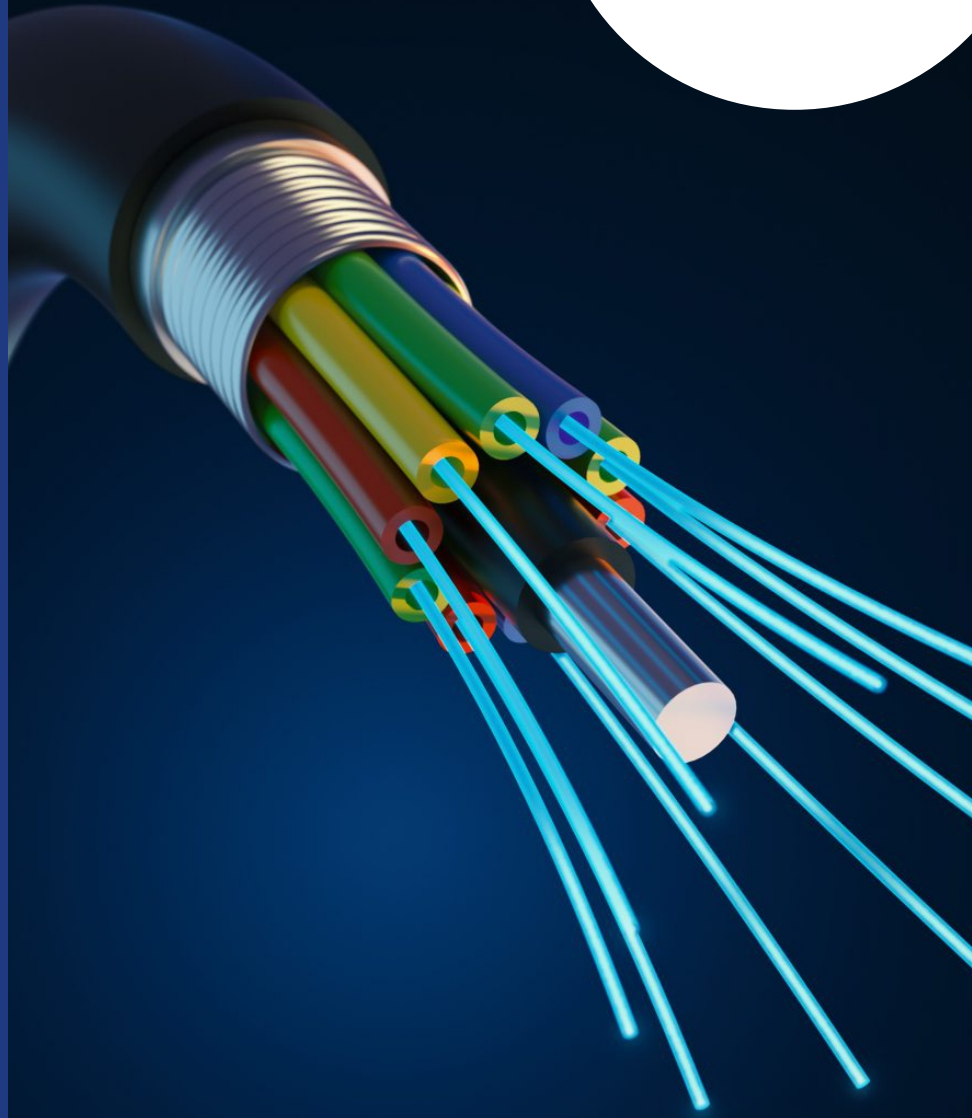
7. Coaxial Cables

- RG 6
- RG 11





NOVA CABLE COMPANY
Complete FTTH Solutions



SIMPLEX CABLE

ALL TYPES OF
CUSTOMIZABLE
FIBER CABLE
AVAILABLE

2. Simplex Cable

A simplex fiber optic cable consists of a single strand of glass or plastic fiber. Simplex fiber is most often used where only a single transmit and/or receive line is required between devices or when a multiplex data signal is used (bi-directional communication over a single fiber).

PRODUCT APPLICATION

Simplex Cables are used mostly for patch cord. Duplex Cables are used in applications where data needs to be transferred bi-directionally.

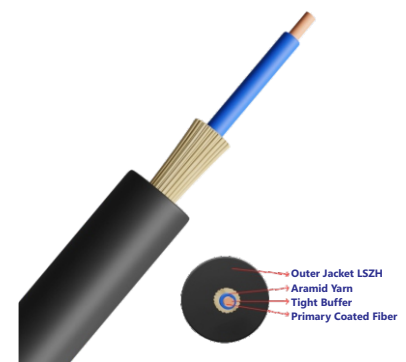
STANDARDS

IEC 60794; ITU-T

CONSTRUCTION DETAILS

1-OUTER SHEATH LSZH & PVC | 2-PERIPHERAL STRENGTH MEMBER ARAMID YARN | 3-COLORED TIGHT BUFFERED WITH FIBER

SIMPLEX CABLE (1F)



TECHNICAL DATA

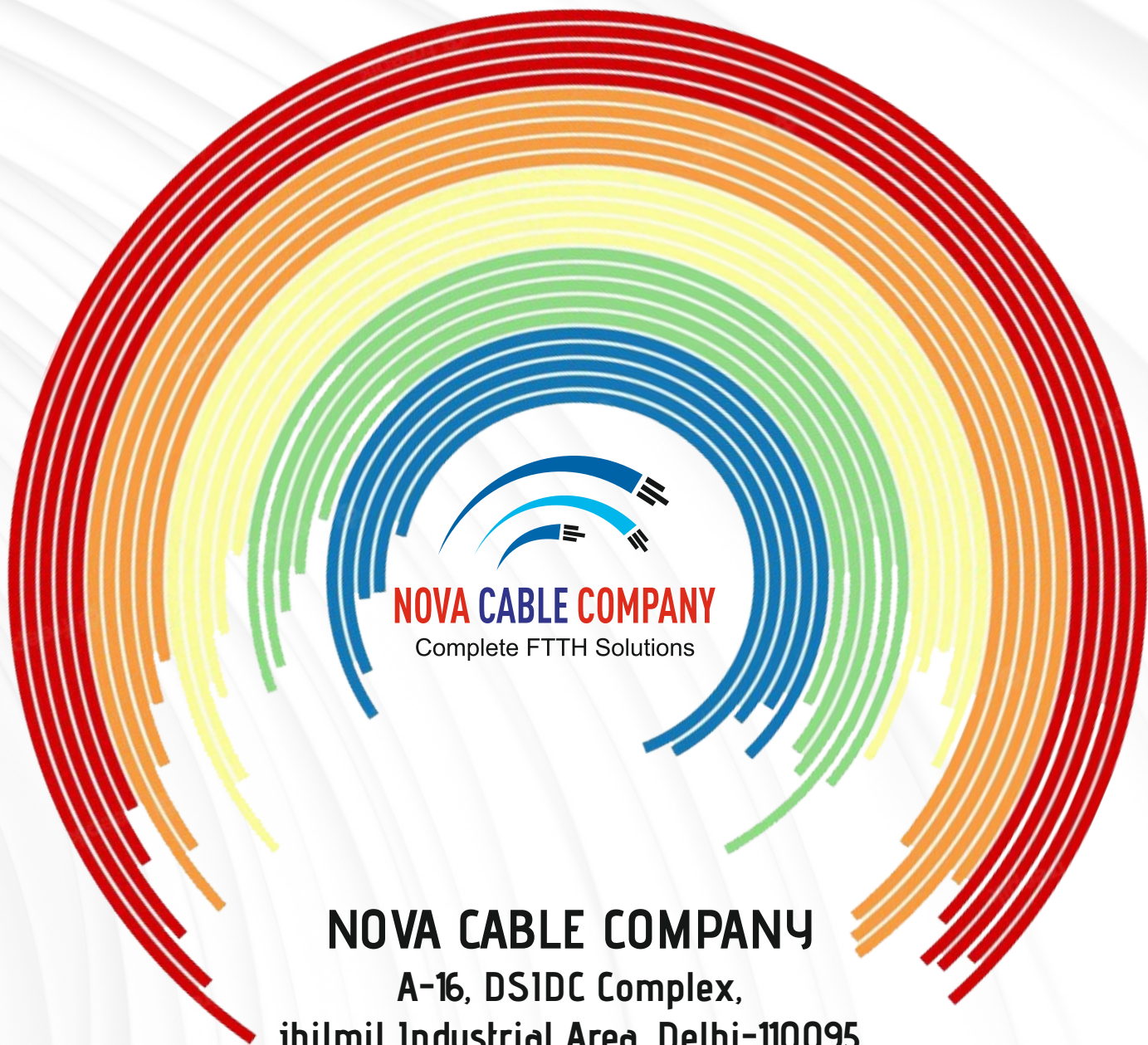
	SIMPLEX	SIMPLEX	DUPLEX	DUPLEX
FIBER COUNT	3	2	3 x 6.2	2 x 4.2
CABLE DIAMETER (MM) +/- 5%	3	2	3 x 6.2	2 x 4.2
CABLE WEIGHT (KG/KM) +/- 10%	9	4	18	8

MECHANICAL PARAMETER

MAX. TENSILE STRENGTH (N)	150	100	200	150
CRUSH RESISTANCE (N/100 X 100 MM)	300	200	300	200
BENDING RADIUS (DYNAMIC)	20D			
ENVIRONMENTAL CONDITIONS	Operating Temperature: -20°C to + 70°C Storage Temperature: -30°C to + 70°C Installation Temperature: -10°C to + 70°C			

OPTICAL PARAMETER

	G.657A1	G.657A2
FIBER TYPE	G.657A1	G.657A2
ATTENUATION (dB/km)	TYPICAL/MAXIMUM	TYPICAL/MAXIMUM
1310 nm	0.34	0.335/0.380
1550 nm	0.25/0.3	0.200/0.250



NOVA CABLE COMPANY

Complete FTTH Solutions

NOVA CABLE COMPANY

A-16, DS1DC Complex,
jhilmil Industrial Area, Delhi-110095

Phone No: +91-11-42683021

Email ID: info@novacablecompany.com

WWW.NOVACABLECOMPANY.COM

Follow us:      